



Introduction

FBs-CMEH is an Ethernet communication module for FATEK FBs series PLC.

FBs-CMEH is one of the communication module of FBs series PLC. With this module, FBs-PLC can act as a client or a server over the Ethernet and provide remote monitoring and diagnostic for PLCs.

While operating, it will utilize CPU communication port 3 and port 4. The working mode of port 3 is fixed as Fatek slave and can be used for programming or debugging while port 4 can be configured as Modbus-TCP server or client, or Fatek client.

FBs-CMEH also has built-in web server, which not only provides users with the ability to setup the configuration via web browser, but also gives user a way to customize his/her own web presentation that better fits what users need to monitor or control the PLC via internet.

Network configuration setup is a cumbersome and technical task for users during installation, especially with a dynamic IP address. The service callback function achieves remote access of any FBs series PLC without public IP address, e.g. in a LAN. In most cases however, users don't need to perform configuration task while using this product.

When emergent events occur in the control system and a notification to the personnel away from the spot is required, the built-in Send Email function can be a solution. For quick response, SMS(Text) notification is also possible if the Email to SMS service is applicable.

Feature

- Multi-client accessible
- Modbus Server or Client operation mode
- Fatek Server and Client*1 operation mode
- IP-based access control
- Built-in web server
- Configuration setup via web browser
- User can create their own customized web pages by using the companion tool – EasyWebDesigner
- Service call back function , eliminate the cumbersome network setup task
- Network clock(SNTP) function, eliminate the periodic time-adjustment task
- Send Email function, with this function sending SMS message is possible via Email to SMS internet service.

Note 1: Fatek Client and Modbus function is exclusive (share the port4.)

Specification

Network Specification

Network interface-10/100BaseT

Network protocol -TCP/IP, ARP, ICMP

Application protocol -FATEK, Modbus/TCP, HTTP, DHCP, DNS, SNTP, SMTP, NetBIOS.

PLC interface- Port3,Port4

PLC interface speed- 307.2Kbps

Operating mode- Server and client

Storage capacity for Web server- 1.8M Byte

Max. customized web-page count- 100 pages

Web access authentication method- Password

Application ports- Modbus-TCP – 502, FATEK – 500, HTTP – 80 or configured by user.

Security mechanism – IP-based access control

Configuration methods- via Ethernet with utility program or Web-browser

Firmware update method – via Intranet

Common Specification

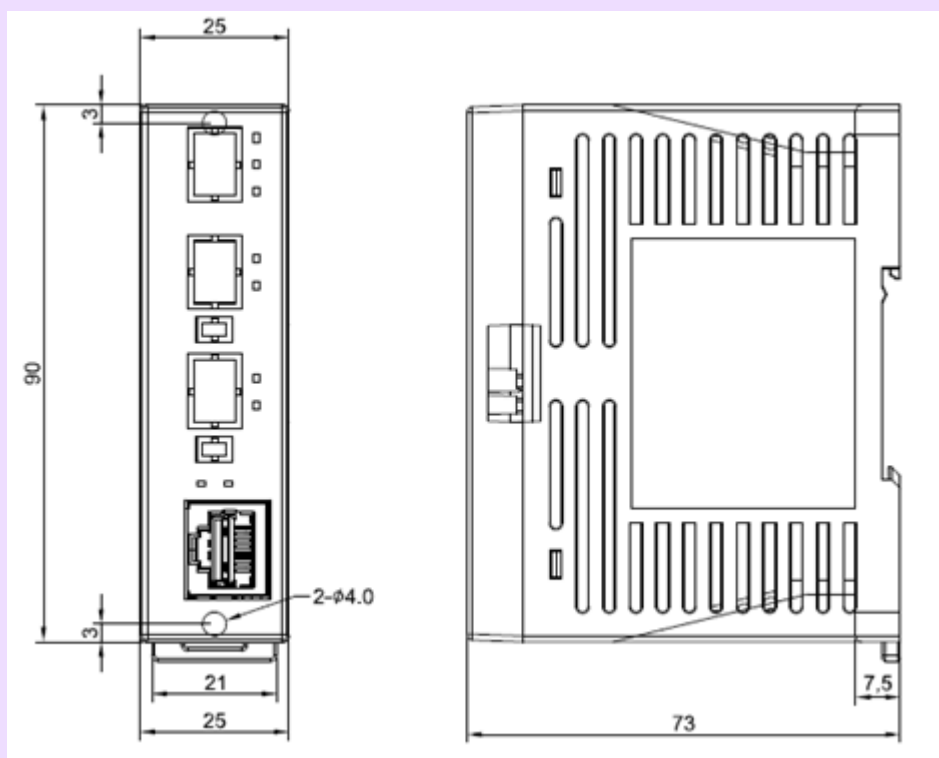
Indicator(s) : LINK(green LED), SPEED(red LED)

Internal Power Consumption: 5V, 250mA(Max. Load)

Operating Temperature : 5 ~ 55 °C

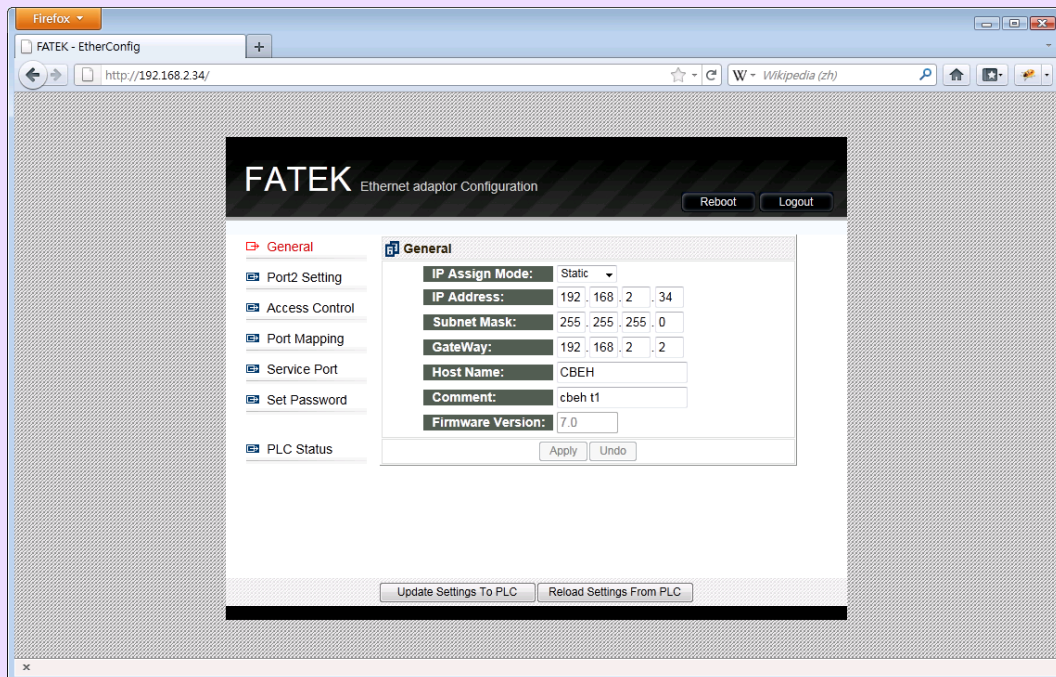
Storage Temperature : -25 ~ 70 °C

Dimension



Screenshot of browser

Configuration setup for CMEH module



Customized Web-page created by using EasyWebDesigner tool

